

Seagull-DevERB

Tacis Cross-Border
Co-operation
Small Project Facility

“Seagull RC” (18 months)

Russian component of the development strategy for Euroregion Baltic

Klaipeda
County Governor
Administration

Baltiysk Municipal
District Administration
Russian Secretariat
of ERB

Administration of
Kaliningrad Region
Central Department
of Economic
Development and Trade

Regional Council
in Kalmar County

P.P.Shirshov Institute of Oceanology,
Atlantic Branch,
Laboratory for Coastal Systems Study

NGO “Klaipeda County
Co-ordination Centre

General aim of the project – Arrangement of conditions for sustainable social and economic development of Kaliningrad region comparable with the development level of neighbouring countries (within Euroregion "Baltic"), and favourable investment climate in the region aiming to Russia and EU approach.

One of **the main purposes** of the project - creation of the Russian component of the Development strategy of Euroregion "Baltic".

WP1 - Joint Transnational
Development Programme
(JTDP)

WP2 - Water resources

WP5 - Information strategy

WP3 - Innovation centers
and SME's as vehicles of
regional development

WP4 - Rural Development
Programs

The overall aim of the WP2 will be in submission of the Euroregion Baltic Joint Transnational Development Programme (JTDP) by water management aspects and considerations as well as participation in all activities planned in the INTERREG SeaGullDevERB project.

The specific goals of WP2:

- development of water issues for JTDP;
- to improve understanding of new approaches of water management (recommended by the EU Water Frame Directive and the HELCOM Joint Comprehensive Action Programme);
- education for local experts in modern approaches of EA and EIA,
- development of recommendations for data base aimed to EIA in the pilot area;
- prioritising the hot spots of the pilot area (Russian part of the Vistula lagoon is under planning) in the Kaliningrad Region in terms of their influence on the Baltic Sea, estimations of consequences of climate changes;
- analysis of prospects and limitations because of overlapping or convergence of local river's sub-basins with administrative municipal structure in the Kaliningrad region and neighbouring participants of ERB.

Methods

Working group

Meetings, workshops and seminars

Participation in all activities planned in the
INTERREG SeaGullDevERB project

Overview of existing programs, institutional, legal and public awareness aspects

Compilation of existing relevant studies and strategies, overview of the situation of 2003, selection of the pilot area and specific priorities according existing situation. Knowledge review of existing situation in ERB and related inputs from Interreg partners. Finalisation and compilation with previous INTERREG SeaGullDevERB related activity.

Legal and administrative differences and possibilities of using WFD together with national legislative basis. Roles of federal, regional and local environmental authorities conformably to the pilot area. Prerequisites to analyse the situation in terms of chemical, ecological and economical indicators. Water statistics.

Overview of existed databases and monitoring programs.

Environmental audit (EA) and environmental impact assessment (IEA)

Workshop “EU WFD and tools for environmental planning, assessment and evaluation, methods of EA and EIA”

Workshop “Training in practical using of EIA tools”

Workshop “Prioritizing of hot spots and spatial analysis using EIA tools for pilot area”. Application of the EIA tools to prioritise the hot spots of pilot basin in Kaliningrad Region in terms of influence upon the Baltic Sea water quality.

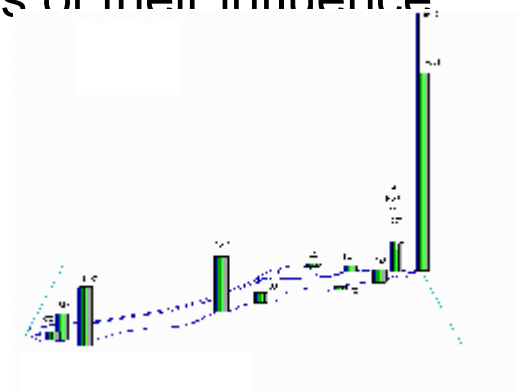
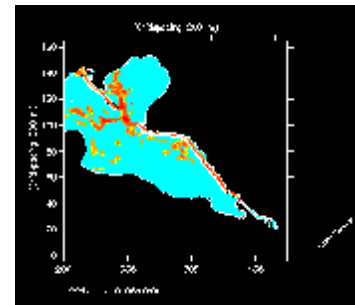
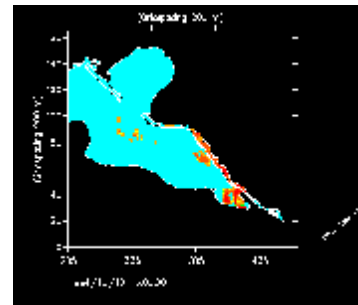
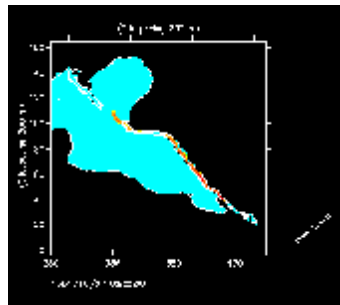
Planning and recommendations for water database for pilot area aimed to EIA.

Scientific basis for water management and planning

Draft estimations of risks and consequences of climate changes (rainfall -> river runoff, wind influence, Baltic sea level variations)

Prioritising the hot spots of the pilot area (Russian part of the Vistula lagoon is under planning) in the Kaliningrad Region in terms of their influence on the Baltic Sea:

- load to the Baltic Sea
- retention time versus point sources
- fate of pollutions



Finalisation of spatial analysis about the local rivers basin areas, their links with administrative structure in the Kaliningrad region and ERB neighbours and related prospects and limitations to JDTP

Public practical participation

Development of recommendations on methods for enhanced dialogue with the citizens and better water quality.

Analysis of possible actions concerning dialogue with affected actors (citizens, private sector, public sector, NGOs, universities, etc.) in the pilot area.

Public involvement in practical activity in the pilot basin: cleaning by two groups of volunteers of small river stream (river Primorskaya) in the pilot area.

Conclusions and recommendations, impact on the JTDP for ERB

Preparation of the document

“Prospects, requirements and limitations for ERB JTDP
in relation with sustainable development of water resources”.

Looking forward to fruitful cooperation !